

# GM2E 180 L 4

# IE2

# GAMAK

3-Phase 400 V (Δ) 50 Hz

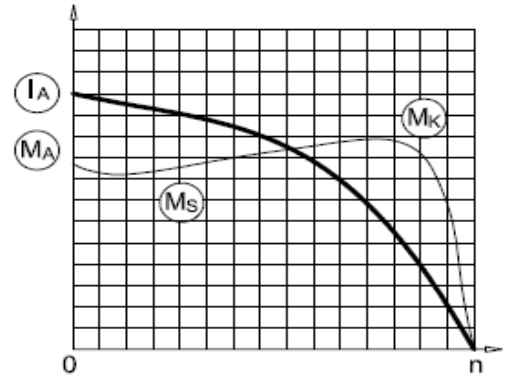
Duty Type : S1

Degree of protection : IP 55 ( TEFC )

Insulation class : F ( 155 °C )

Temp rise : Class B ( 80K )

Mounting Design : B3



## ELECTRICAL DESIGN

## Direct On Line

Rated output (kW) : 22

Locked rotor Current – Ia (A) : 353

Ia / In : 8.3

Speed (rpm) : 1470

Locked rotor Torque – Ma (Nm) : 386

Ma / Mn : 2.7

Rated current (A) : 42.5

## Y / Δ Starting

Torque – Mn (Nm) : 143

Locked rotor Current – Ia (A) : 115

Ia / In : 2.7

Cos φ : 0.82

Locked rotor Torque – Ma (Nm) : 172

Efficiency % : 

|      |      |      |
|------|------|------|
| 4/4  | 3/4  | 1/2  |
| 91.7 | 91.7 | 90.6 |

Ma / Mn : 1.2

Moment of inertia J (kgm)<sup>2</sup> : 0.15

Breakdown Torque – Mk (Nm) : 543

Mk / Mn : 3.8

## MECHANICAL DESIGN

Frame : Cast Iron

End shields : Cast Iron

Cooling fan : Plastic

Terminal box : Plastic

Cable gland : Pg 29

No of cable glands : 2

## Bearing Arrangement

Standard design

Drive End

6310 ZZ C3

Non Drive End

6210 ZZ C3

Reinforced design

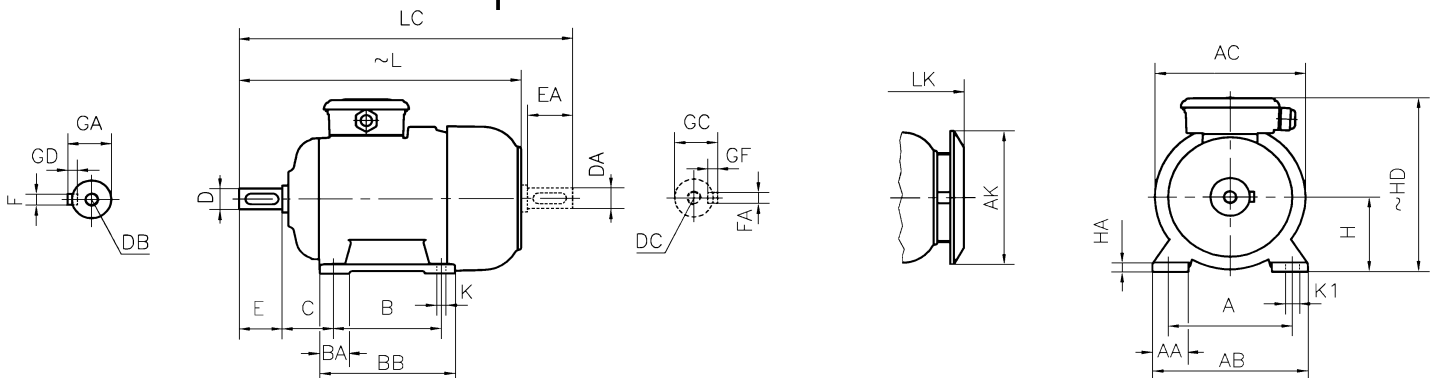
NU 310 E

6310 C3

Noise Level (dB-A) : 64

Paint : RAL 7031- Grey

Approximate weight (kg) : 180



## DIMENSIONS

### Dimensions of foot mounted motors for mounting arrangement : B3, B6, B7, B8, B15, V5, V6

| H   | HD<br>~ | HA | A   | AA | AB  | ØAC | ØAK | K  | K1 | B   | B' | BA | BA' | BB  | L<br>~ | LC  | LK<br>~ | C   | E<br>EA | DB<br>DC | ØD<br>ØDA | GA<br>GC | FxGD<br>FAXGF |
|-----|---------|----|-----|----|-----|-----|-----|----|----|-----|----|----|-----|-----|--------|-----|---------|-----|---------|----------|-----------|----------|---------------|
| 180 | 421     | 24 | 279 | 68 | 354 | 348 | 303 | 15 | -  | 279 | -  | 62 | -   | 329 | 695    | 811 | 752     | 121 | 110     | M16      | 48        | 51.5     | 14X9          |

\* Efficiencies are calculated according to indirect method where the additional load losses are determined from exact measurements at different load points.